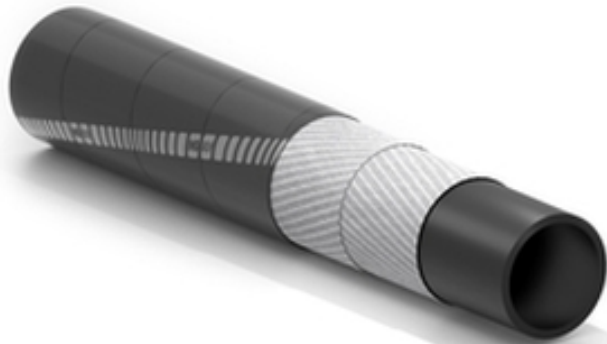


# Coolcable

## Cable cooling hose



**Application:**

softwall hose used as sleeves for cooling electrical cables in automatic welding systems.

Insulating rubber  
Industrial applications  
Length up to 120 m

**Tube:**  
black, smooth, insulating SBR/NR rubber.

**Reinforcement:**  
high strength synthetic cord.

**Cover:**  
black, smooth (wrapped finish), insulating SBR/NR rubber, weathering resistant.

**Temperature:**  
from -30°C (-22°F) to +80°C (+176°F).

**Electrical resistance:**  
 $1 \times 10^8 \Omega/m$ .



# Coolcable



Code	Inside diameter		Outside diameter		Working pressure		Burst pressure		Weight nominal		Length max	
	mm	inch	mm	inch	bar	psi	bar	psi	kg/m	lbs/ft	m	ft
1191071	12	15/32	22	0,87	10	150	30	450	0,34	0,23	120	400
1204505	14	9/16	21	0,83	10	150	30	450	0,25	0,17	120	400
1047612	15	19/32	22	0,87	10	150	30	450	0,25	0,17	120	400
1191080	18	23/32	28	1,10	10	150	30	450	0,46	0,31	120	400
1175513	20	25/32	30	1,18	10	150	30	450	0,5	0,33	120	400
1130200	25	1	33	1,30	10	150	30	450	0,44	0,30	120	400
1118722	28	1-7/64	35	1,38	10	150	30	450	0,43	0,29	120	400
1176781	30	1-3/16	40	1,58	10	150	30	450	0,7	0,47	120	400
1319795	35	1-3/8	45	1,77	10	150	30	450	0,75	0,50	120	400
1352741	38	1-1/2	47	1,85	10	150	30	450	0,7	0,47	120	400
1319388	42	1-21/32	50	1,97	10	150	30	450	0,68	0,46	120	400
1212567	48	1-57/64	60	2,36	10	150	30	450	1,26	0,85	120	400
1089242	55	2-11/64	65	2,56	10	150	30	450	1,12	0,76	120	400

**Variants available on request:**

1. In CR or EPDM rubber.
2. Different diameters.
3. Different working pressures.

## SPECIAL DETAILS

### SAFETY INFORMATION – USER RESPONSIBILITIES

The service life of rubber hoses mainly depends on the dedicated use. Equipment and systems where the hose is installed must be designed safely. Since our hose can be designed for different applications, **IVG Colbachini** cannot guarantee the proper functioning of the product for all situations.

The analysis of the technical aspects related to specific uses must be performed by the users when choosing the product that meets their requirements. So, in relation to the variety of operating conditions and applications of the IVG hose, the user is solely responsible for the final choice of the product deemed suitable to satisfy the performance and safety requirements called for the application.

The information and technical data shown in the product data sheets must be examined by users with appropriate technical skills. IVG Colbachini is not responsible for other uses, identified by the end user, that are different from the one shown in its catalogues, product sheets, offers, order confirmations and any recommendations attached.

An inappropriate choice of the product or a failure to follow the procedures of installation, use, maintenance and storage of the hoses may lead to a hose break and cause material damage and/or serious injury to people.

For the selection and proper use of the IVG products you can also refer to the document "Recommendations for selection, storage, use and maintenance of rubber hoses" provided by Assogomma and available on [www.ivgspa.it](http://www.ivgspa.it). These recommendations are according to the international standard ISO 8331, "Plastic and rubber hoses and hose assemblies - Guidelines for selection, storage, use and maintenance."

**For safety reasons, never exceed the working pressure indicated in the product data sheet.**

For specific applications of rubber hoses, please refer to the legal requirements or specific standards; moreover, additional recommendations for particularly critical applications are available.

For further information, contact the Marketing department ([marketing@ivgspa.it](mailto:marketing@ivgspa.it)).