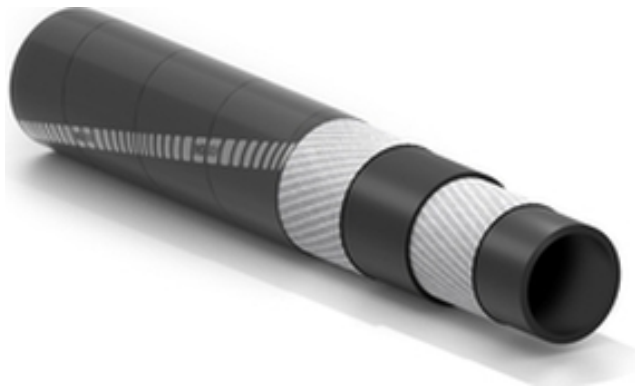


# AIR NF F 11-380/cat.2

## Compressed air hose



### Specifications:

BS 6853 Cat. Ia Int. Cat. Ia Ext. EN 45545-2:2015  
HL3 R22 and R23. NF F11-380:2017/CAT.2.

### Application:

softwall hose designed to convey compressed air in rail carriages and locomotive systems according to the standard NF F11-380:2017/CAT.2. Fire resistant, with low toxicity and smoke emission. Halogen free.

Multiservice hose for compressed air  
According to EN 45545-2 HL3 R22 and R23  
Fire resistant, halogen free



### Tube:

black, smooth, synthetic rubber.

### Reinforcement:

high strength synthetic cord.

### Cover:

black, smooth (wrapped finish), synthetic rubber, weathering, ozone, oil and fire resistant.

### Temperature:

from -30°C (-22°F) to +70°C (+158°F).

### Branding:

continuous white band "IVG/quarter and year of production - I.D. - NF F 11 - 380 CAT 2 - batch n°".



# AIR NF F 11-380/cat.2



| Code    | Inside diameter |        | Outside diameter |      | Working pressure |     | Burst pressure |     | Weight nominal |        | Length max |     |
|---------|-----------------|--------|------------------|------|------------------|-----|----------------|-----|----------------|--------|------------|-----|
|         | mm              | inch   | mm               | inch | bar              | psi | bar            | psi | kg/m           | lbs/ft | m          | ft  |
| 1450719 | 6               | 1/4    | 16               | 0,63 | 10               | 150 | 50             | 750 | 0,23           | 0,16   | 60         | 200 |
| 1438212 | 8               | 5/16   | 18               | 0,71 | 10               | 150 | 50             | 750 | 0,27           | 0,18   | 60         | 200 |
| 1438441 | 10              | 25/64  | 22               | 0,87 | 10               | 150 | 50             | 750 | 0,41           | 0,28   | 60         | 200 |
| 1432826 | 12              | 15/32  | 24               | 0,95 | 10               | 150 | 50             | 750 | 0,46           | 0,31   | 60         | 200 |
| 1449869 | 13              | 1/2    | 26               | 1,02 | 10               | 150 | 50             | 750 | 0,51           | 0,34   | 60         | 200 |
| 1414844 | 15              | 19/32  | 27               | 1,06 | 10               | 150 | 50             | 750 | 0,54           | 0,36   | 60         | 200 |
| 1438581 | 16              | 5/8    | 29               | 1,14 | 10               | 150 | 50             | 750 | 0,59           | 0,40   | 60         | 200 |
| 1436066 | 19              | 3/4    | 33               | 1,30 | 10               | 150 | 50             | 750 | 0,76           | 0,51   | 60         | 200 |
| 1432419 | 20              | 25/32  | 34               | 1,34 | 10               | 150 | 50             | 750 | 0,79           | 0,53   | 60         | 200 |
| 1432427 | 22              | 7/8    | 37               | 1,46 | 10               | 150 | 50             | 750 | 0,94           | 0,63   | 60         | 200 |
| 1449451 | 25              | 1      | 39,5             | 1,56 | 10               | 150 | 50             | 750 | 0,97           | 0,65   | 60         | 200 |
| 1437127 | 28              | 1/7-64 | 47               | 1,85 | 10               | 150 | 50             | 750 | 1,54           | 1,04   | 60         | 200 |
| 1480308 | 32              | 1 1/4  | 49               | 1,93 | 10               | 150 | 50             | 750 | 1,44           | 0,97   | 60         | 200 |
| 1499556 | 38              | 1 1/2  | 57               | 2,24 | 10               | 150 | 50             | 750 | 1,95           | 1,31   | 60         | 200 |

Variants available on request:

1. Different diameters.

