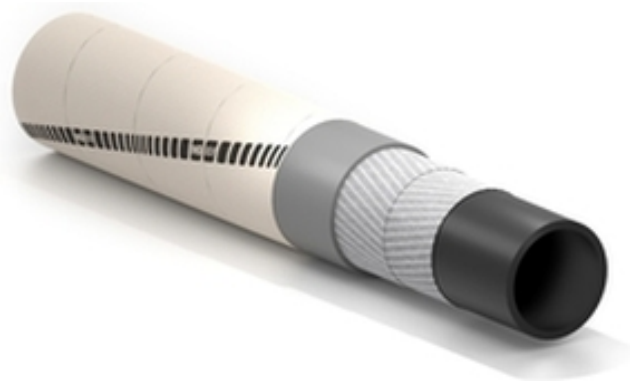


Cleveland

Рукав для подачи охлаждающей воды, покрытие из материала potex®



Применение:

напорный рукав для подачи воды в металлургии, стекольной промышленности и на др. видах горячего производства, где рукава находятся вблизи источников теплового излучения.

с покрытием potex®

максимальная длина до 120м

устойчив к излучающему теплу до + 300°C

Внутренний слой:

черный, гладкий, из синтетического каучука EPDM.

Усиление:

высокопрочный синтетический корд.

Покрытие:

из завулканизированного теплостойкого материала potex®, устойчиво к тепловому излучению до +300°C.

Температура:

от -40°C до +120°C.



Cleveland



Код	Внутренний диаметр		Внешний диаметр		Рабочее давление		Разрывное давление		Номинальный вес		Максимальная длина	
	mm	inch	mm	inch	bar	psi	bar	psi	kg/m	lbs/ft	m	ft
1198645	13	1/2	25	0,99	10	150	30	450	0,43	0,29	120	400
1219472	16	5/8	27	1,06	10	150	30	450	0,43	0,29	120	400
1152289	19	3/4	30	1,18	10	150	30	450	0,5	0,34	120	400
1152297	25	1	37	1,46	10	150	30	450	0,7	0,47	120	400
1150642	32	1-1/4	44,5	1,75	10	150	30	450	0,86	0,58	120	400
1285114	38	1-1/2	54	2,13	10	150	30	450	1,37	0,92	120	400
1159500	51	2	65	2,56	10	150	30	450	1,5	1,01	120	400
1152262	63,5	2-1/2	80	3,15	10	150	30	450	2,21	1,49	120	400
1159186	76	3	96	3,78	10	150	30	450	3,22	2,16	120	400
1157469	102	4	124	4,89	10	150	30	450	4,57	3,07	120	400

Возможные варианты по запросу:

1. Другие диаметры.
2. Другое давление.
3. Cleveland/Insulating - диэлектрическое исполнение с сопротивлением $\geq 1 \times 10^8 \Omega/\text{м}$.

SPECIAL DETAILS

SAFETY INFORMATION – USER RESPONSIBILITIES

The service life of rubber hoses mainly depends on the dedicated use. Equipment and systems where the hose is installed must be designed safely. Since our hose can be designed for different applications, **IVG Colbachini** cannot guarantee the proper functioning of the product for all situations.

The analysis of the technical aspects related to specific uses must be performed by the users when choosing the product that meets their requirements. So, in relation to the variety of operating conditions and applications of the IVG hose, the user is solely responsible for the final choice of the product deemed suitable to satisfy the performance and safety requirements called for the application.

The information and technical data shown in the product data sheets must be examined by users with appropriate technical skills. IVG Colbachini is not responsible for other uses, identified by the end user, that are different from the one shown in its catalogues, product sheets, offers, order confirmations and any recommendations attached.

An inappropriate choice of the product or a failure to follow the procedures of installation, use, maintenance and storage of the hoses may lead to a hose break and cause material damage and/or serious injury to people.

For the selection and proper use of the IVG products you can also refer to the document "Recommendations for selection, storage, use and maintenance of rubber hoses" provided by Assogomma and available on www.ivgspa.it. These recommendations are according to the international standard ISO 8331, "Plastic and rubber hoses and hose assemblies - Guidelines for selection, storage, use and maintenance."

For safety reasons, never exceed the working pressure indicated in the product data sheet.

For specific applications of rubber hoses, please refer to the legal requirements or specific standards; moreover, additional recommendations for particularly critical applications are available.

For further information, contact the Marketing department (marketing@ivgspa.it).