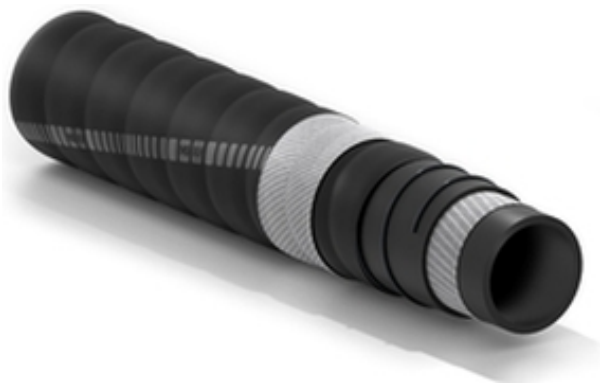


Amalfi LO



Рукав для отвода выхлопных газов, смешанных с морской водой



Применение:

гофрированный, напорно-всасывающий гибкий и лёгкий рукав для отвода выхлопных газов, смешанных с морской водой, предназначен для прогулочных катеров длиной до 24 метров.

разные диаметры
одобрен RINA и Lloyd's
Отличный радиус изгиба

Нормативно-правовые акты:

ISO 13363:2016 кат. 2B Одобрено RINA с Lloyd's. SAE J 2006:2013 кат. R2 Одобрено RINA с Lloyd's.



Внутренний слой:

чёрный, гладкий из синтетического каучука, устойчивый к выхлопным газам.

Усиление:

высокопрочный синтетический корд, встроенная стальная спираль.

Покрытие:

чёрное, гофрированное (с отпечатком текстильного бандажа), из синтетического маслбензостойкого каучука, устойчивое к атмосферным воздействиям и истиранию.

Температура:

от -30°C до +100°C.

Маркировка:

красная марк. лента: IVG BOAT AMALFI LO MARINE WET EXHAUST B.P. 2,5 bar 37,5 psi -30°C+100°C -22°F+212°F RINA N° DIP437423CS/003 ISO 13363:16 2B LLOYD'S LR2003044TA SAE J 2006:13 R2 I.D. M/Y.



Amalfi LO



Код	Внутренний диаметр		Разрывное давление		Номинальный вес		Радиус изгиба		Максимальная длина	
	mm	inch	bar	psi	kg/m	lbs/ft	mm	inch	m	ft
1439103	76	3	2,5	38	1,74	1,17	230	9,1	60	200
1441221	80	3-5/32	2,5	38	1,82	1,22	240	9,5	60	200
1439111	90	3-35/64	2,5	38	2,03	1,36	315	12,4	60	200
1439359	102	4	2,5	38	2,37	1,59	350	13,8	60	200
1443330	110	4-21/64	2,5	38	2,58	1,73	440	17,3	60	200
1448935	114	4-31/64	2,5	38	2,67	1,79	500	19,7	60	200
1440845	120	4-23/32	2,5	38	2,81	1,89	530	20,9	60	200
1440667	125	5	2,5	38	2,92	1,96	560	22,1	60	200
1439340	127	5	2,5	38	2,96	1,99	560	22,1	60	200
1439308	130	5-1/8	2,5	38	3,03	2,04	582	22,9	12	40
1439120	152	6	2,5	38	3,52	2,37	680	26,8	60	200
1440055	203	8	2,5	38	5,52	3,71	1100	43,3	60	200
1439294	205	8-5/94	2,5	38	5,57	3,74	1200	47,3	12	40
1444166	254	10	2,5	38	8,00	5,38	1400	55,2	12	40

Возможные варианты по запросу:

1. Другие диаметры.

SPECIAL DETAILS

SAFETY INFORMATION – USER RESPONSIBILITIES

The service life of rubber hoses mainly depends on the dedicated use. Equipment and systems where the hose is installed must be designed safely. Since our hose can be designed for different applications, **IVG Colbachini** cannot guarantee the proper functioning of the product for all situations.

The analysis of the technical aspects related to specific uses must be performed by the users when choosing the product that meets their requirements. So, in relation to the variety of operating conditions and applications of the IVG hose, the user is solely responsible for the final choice of the product deemed suitable to satisfy the performance and safety requirements called for the application.

The information and technical data shown in the product data sheets must be examined by users with appropriate technical skills. IVG Colbachini is not responsible for other uses, identified by the end user, that are different from the one shown in its catalogues, product sheets, offers, order confirmations and any recommendations attached.

An inappropriate choice of the product or a failure to follow the procedures of installation, use, maintenance and storage of the hoses may lead to a hose break and cause material damage and/or serious injury to people.

For the selection and proper use of the IVG products you can also refer to the document "Recommendations for selection, storage, use and maintenance of rubber hoses" provided by Assogomma and available on www.ivgspa.it. These recommendations are according to the international standard ISO 8331, "Plastic and rubber hoses and hose assemblies - Guidelines for selection, storage, use and maintenance."

For safety reasons, never exceed the working pressure indicated in the product data sheet.

For specific applications of rubber hoses, please refer to the legal requirements or specific standards; moreover, additional recommendations for particularly critical applications are available.

For further information, contact the Marketing department (marketing@ivgspa.it).