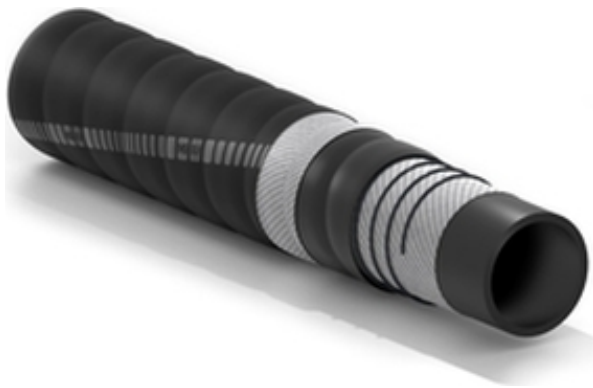


# Etna



## Marine wet exhaust gas hose



**Application:**

hardwall corrugated hose, flexible and lightweight, used to convey wet gas exhaust mixed with sea water in pleasure boats.

Approved by VTT and Lloyd's  
 Wide range of diameters  
 Excellent bending radius

**Specifications:**

Lloyd's Register Rules and Regulations for the Classification of Special Service Craft. VTT approved Nordic Boat Standard MC9.



**Cover:**

black, corrugated (wrapped finish), flame retardant synthetic rubber, weathering resistant.

**Reinforcement:**

high strength synthetic cord plus steel helix wire.

**Tube:**

black, smooth, synthetic rubber, gas exhaust resistant

**Branding:**

continuous white/blue stripe "Boat (family logo) ETNA - MARINE WET GAS EXHAUST - LLOYD'S N° LR24147261TA - FIRE RESISTANT - ACCORDING MK9 VTT REP 761/97 (IVG LOGO)".

**Temperature:**

from -30°C (-22°F) to +100°C (+212°F).



# Etna



Code	Inside diameter		Length max		Bending radius		Weight nominal		Burst pressure	
	mm	inch	m	ft	mm	inch	kg/m	lbs/ft	bar	psi
1386530	25	1	60	200	100	3,9	0,53	0,35	2	30
1391526	32	1-1/4	60	200	130	5,1	0,65	0,43	2	30
1390902	38	1-1/2	60	200	150	5,9	0,74	0,50	2	30
1383620	40	1-37/64	60	200	160	6,3	0,77	0,52	2	30
1383639	45	1-49/64	60	200	170	6,7	0,86	0,57	2	30
1378392	51	2	60	200	180	7,1	1,06	0,71	2	30
1383612	58	2-9/32	60	200	190	7,5	1,2	0,80	2	30
1383590	63,5	2-1/2	60	200	200	7,9	1,3	0,87	2	30
1383604	76	3	60	200	250	9,9	1,46	0,98	2	30
1384856	90	3-35/64	60	200	330	13,0	1,71	1,15	2	30
1384864	102	4	60	200	410	16,2	2,05	1,38	2	30
1385429	127	5	60	200	560	22,1	2,58	1,73	2	30
1393952	152	6	60	200	680	26,8	3,18	2,14	2	30
1396757	203	8	60	200	995	39,2	5,5	3,69	2	30

## SPECIAL DETAILS

### SAFETY INFORMATION – USER RESPONSIBILITIES

The service life of rubber hoses mainly depends on the dedicated use. Equipment and systems where the hose is installed must be designed safely. Since our hose can be designed for different applications, **IVG Colbachini** cannot guarantee the proper functioning of the product for all situations.

The analysis of the technical aspects related to specific uses must be performed by the users when choosing the product that meets their requirements. So, in relation to the variety of operating conditions and applications of the IVG hose, the user is solely responsible for the final choice of the product deemed suitable to satisfy the performance and safety requirements called for the application.

The information and technical data shown in the product data sheets must be examined by users with appropriate technical skills. IVG Colbachini is not responsible for other uses, identified by the end user, that are different from the one shown in its catalogues, product sheets, offers, order confirmations and any recommendations attached.

An inappropriate choice of the product or a failure to follow the procedures of installation, use, maintenance and storage of the hoses may lead to a hose break and cause material damage and/or serious injury to people.

For the selection and proper use of the IVG products you can also refer to the document "Recommendations for selection, storage, use and maintenance of rubber hoses" provided by Assogomma and available on [www.ivgspa.it](http://www.ivgspa.it). These recommendations are according to the international standard ISO 8331, "Plastic and rubber hoses and hose assemblies - Guidelines for selection, storage, use and maintenance."

**For safety reasons, never exceed the working pressure indicated in the product data sheet.**

For specific applications of rubber hoses, please refer to the legal requirements or specific standards; moreover, additional recommendations for particularly critical applications are available.

For further information, contact the Marketing department ([marketing@ivgspa.it](mailto:marketing@ivgspa.it)).