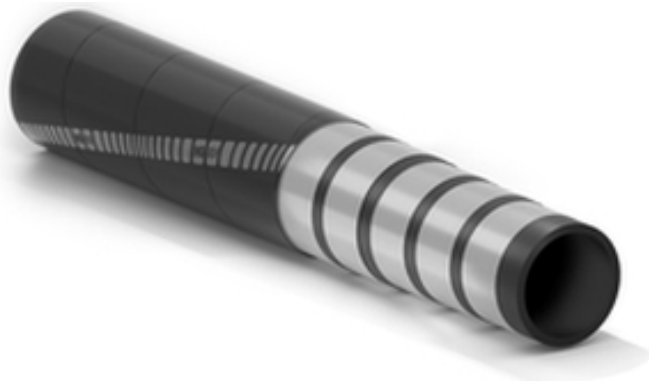


Dragasteel

Discharge line hose in dredging operations



Application:

heavy duty steel cord hose used as a flexible connection in discharge lines. Used in heavy-duty applications for delivery of sand, gravel and debris mixed with water.

Also available with: enlarged ends or built-in fittings with rubber protected flanges. Possible to order with: portions of integrated flotation or fully integrated flotation.

Plies of steel wire cord
Resistant to abrasion and sea water
Heavy duty

Tube:

black, smooth, SBR/NR rubber with excellent resistance to abrasion and lacerations.

Reinforcement:

plies of steel wire cord divided by layers of rubber to improve the hose flexibility.

Cover:

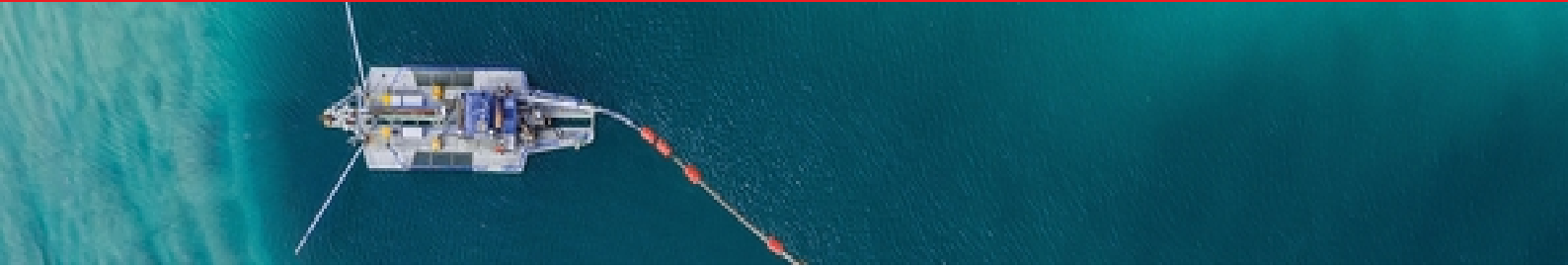
black, smooth (wrapped finish), synthetic rubber, highly resistant to sea water, weathering and abrasion.

Temperature:

from -40°C (-40°F) to +70°C (+158°F).



Dragasteel



Code	Inside diameter		Outside diameter		Working pressure		Burst pressure		Weight nominal		Flexibility	Length max	
	mm	inch	mm	inch	bar	psi	bar	psi	kg/m	lbs/ft		°/m	m
1397338	200	8	246	9,69	15	225	45	675	20,69	13,90	38	12	40
1272233	254	10	310	12,21	15	225	45	675	31,31	21,04	35	12	40
1327852	300	12	354	13,95	15	225	45	675	34,74	23,35	32	12	40
1360523	350	14	401	15,80	15	225	45	675	40,93	27,51	29	12	40
1210254	400	16	446	17,57	15	225	45	675	41,84	28,31	27	12	40
1204645	450	18	496	19,54	15	225	45	675	46,76	31,65	22	12	40
1211285	500	20	559	22,02	15	225	45	675	75,74	50,90	17	12	40
1362259	590	23,25	666	26,24	15	225	45	675	108,41	72,85	12	12	40

Variants available on request:

1. Different diameters.

SPECIAL DETAILS

SAFETY INFORMATION – USER RESPONSIBILITIES

The service life of rubber hoses mainly depends on the dedicated use. Equipment and systems where the hose is installed must be designed safely. Since our hose can be designed for different applications, **IVG Colbachini** cannot guarantee the proper functioning of the product for all situations.

The analysis of the technical aspects related to specific uses must be performed by the users when choosing the product that meets their requirements. So, in relation to the variety of operating conditions and applications of the IVG hose, the user is solely responsible for the final choice of the product deemed suitable to satisfy the performance and safety requirements called for the application.

The information and technical data shown in the product data sheets must be examined by users with appropriate technical skills. IVG Colbachini is not responsible for other uses, identified by the end user, that are different from the one shown in its catalogues, product sheets, offers, order confirmations and any recommendations attached.

An inappropriate choice of the product or a failure to follow the procedures of installation, use, maintenance and storage of the hoses may lead to a hose break and cause material damage and/or serious injury to people.

For the selection and proper use of the IVG products you can also refer to the document "Recommendations for selection, storage, use and maintenance of rubber hoses" provided by Assogomma and available on www.ivgspa.it. These recommendations are according to the international standard ISO 8331, "Plastic and rubber hoses and hose assemblies - Guidelines for selection, storage, use and maintenance."

For safety reasons, never exceed the working pressure indicated in the product data sheet.

For specific applications of rubber hoses, please refer to the legal requirements or specific standards; moreover, additional recommendations for particularly critical applications are available.

For further information, contact the Marketing department (marketing@ivgspa.it).