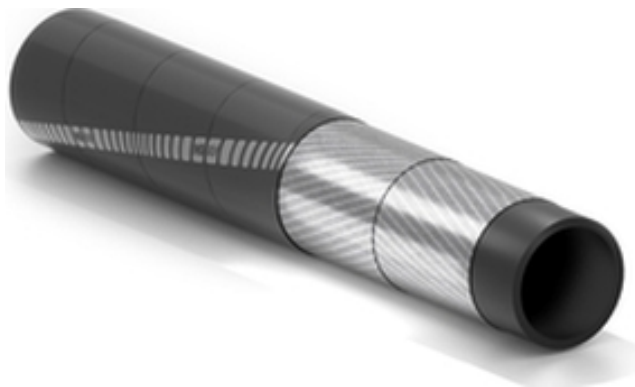


# LPG/CM/EN 1762:1997/D

## Gas delivery hose



**Specifications:**  
EN 1762:1997.

**Application:**

steel cord hose suitable for the delivery of liquefied petroleum gas, LPG (liquid or gas) and natural gas.

Reinforcement with metallic fabrics  
For LPG and LNG  
Flexible for easy handling



**Tube:**

extruded, black, smooth, synthetic rubber.

**Reinforcement:**

plies of steel wire cord.

**Cover:**

black, smooth (wrapped finish), synthetic rubber, weathering and ozone resistant. Pin pricked cover to allow gas permeation.

**Temperature:**

from -30°C (-22°F) to +100°C (+212°F).

**Electrical resistance:**

electrical resistance below  $1 \times 10^2 \Omega$ ; on service length assured through the connection between the steel wires and fitted couplings (type M).

**Branding:**

continuous yellow brand "IVG - EN 1762:1997 - Type D - I.D....W.P...bar - M - quarter and year of production".



# LPG/CM/EN 1762:1997/D



Code	Inside diameter		Outside diameter		Working pressure		Burst pressure		Weight nominal		Bending radius		Length max	
	mm	inch	mm	inch	bar	psi	bar	psi	kg/m	lbs/ft	mm	inch	m	ft
1435566	13	1/2	26	1,02	25	367	100	1470	0,58	0,39	100	3,9	60	200
1410148	25	1	38	1,50	25	367	100	1470	1,01	0,68	200	7,9	60	200
1410911	32	1-1/4	45	1,77	25	367	100	1470	1,23	0,83	250	9,9	60	200
1421085	50	2	66	2,60	25	367	100	1470	2,23	1,50	400	15,7	60	200

### Recommended Couplings:



Thread coupling EN 14420-5 (DIN 2817)



Camlock EN 14420-7 (DIN 2828)



Safety clamps EN 14420-3 (DIN 2817)

## SPECIAL DETAILS

### SAFETY INFORMATION – USER RESPONSIBILITIES

The service life of rubber hoses mainly depends on the dedicated use. Equipment and systems where the hose is installed must be designed safely. Since our hose can be designed for different applications, **IVG Colbachini** cannot guarantee the proper functioning of the product for all situations.

The analysis of the technical aspects related to specific uses must be performed by the users when choosing the product that meets their requirements. So, in relation to the variety of operating conditions and applications of the IVG hose, the user is solely responsible for the final choice of the product deemed suitable to satisfy the performance and safety requirements called for the application.

The information and technical data shown in the product data sheets must be examined by users with appropriate technical skills. IVG Colbachini is not responsible for other uses, identified by the end user, that are different from the one shown in its catalogues, product sheets, offers, order confirmations and any recommendations attached.

An inappropriate choice of the product or a failure to follow the procedures of installation, use, maintenance and storage of the hoses may lead to a hose break and cause material damage and/or serious injury to people.

For the selection and proper use of the IVG products you can also refer to the document "Recommendations for selection, storage, use and maintenance of rubber hoses" provided by Assogomma and available on [www.ivgspa.it](http://www.ivgspa.it). These recommendations are according to the international standard ISO 8331, "Plastic and rubber hoses and hose assemblies - Guidelines for selection, storage, use and maintenance."

**For safety reasons, never exceed the working pressure indicated in the product data sheet.**

For specific applications of rubber hoses, please refer to the legal requirements or specific standards; moreover, additional recommendations for particularly critical applications are available.

For further information, contact the Marketing department ([marketing@ivgspa.it](mailto:marketing@ivgspa.it)).