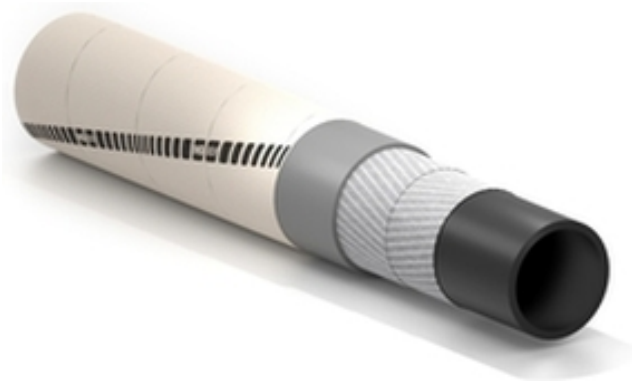


Essen

Cooling water discharge hose with fibre glass cover



Application:

softwall hose for discharge of cooling water in steel mills, foundries, and in all cases where a rubber hose is working close to sources of heat. Resistant against splashes of white hot metal.

It resists radiant heat up to +530°C
Length up to 120 m
Perfect vulcanization

Tube:

black, smooth, EPDM rubber.

Reinforcement:

high strength synthetic cord.

Cover:

covered with fibre glass, vulcanized, heat resistant. The fibre glass cover resists radiant heat up to +530°C (+986°F).

Temperature:

from -40°C (-40°F) to +120°C (+248°F).



Essen



Code	Inside diameter		Outside diameter		Working pressure		Burst pressure		Weight nominal		Length max	
	mm	inch	mm	inch	bar	psi	bar	psi	kg/m	lbs/ft	m	ft
1345621	13	1/2	22	0,87	10	150	30	450	0,31	0,21	120	400
1308424	16	5/8	26,5	1,04	10	150	30	450	0,43	0,29	120	400
1244612	19	3/4	30,5	1,20	10	150	30	450	0,56	0,38	120	400
1297112	25	1	38,5	1,52	10	150	30	450	0,85	0,57	120	400
1308432	32	1-1/4	43	1,69	10	150	30	450	0,8	0,54	120	400
1297090	38	1-1/2	57,5	2,27	10	150	30	450	1,81	1,22	120	400
1368729	51	2	64,5	2,54	10	150	30	450	1,5	1,01	120	400
1308408	63,5	2-1/2	79	3,11	10	150	30	450	2,2	1,48	120	400
1348531	76	3	95,5	3,76	10	150	30	450	3,17	2,13	120	400
1314408	102	4	119,5	4,71	10	150	30	450	3,68	2,47	120	400

Variants available on request:

1. Different diameters.
2. Different working pressures.
3. Essen/insulating with electrical resistance $\geq 1 \times 10^8 \Omega/m$.
4. Essen/insulating/CR electrically isolating, with further CR rubber cover with fire resistant characteristics according to ASTM C 542.

SPECIAL DETAILS

SAFETY INFORMATION – USER RESPONSIBILITIES

The service life of rubber hoses mainly depends on the dedicated use. Equipment and systems where the hose is installed must be designed safely. Since our hose can be designed for different applications, **IVG Colbachini** cannot guarantee the proper functioning of the product for all situations.

The analysis of the technical aspects related to specific uses must be performed by the users when choosing the product that meets their requirements. So, in relation to the variety of operating conditions and applications of the IVG hose, the user is solely responsible for the final choice of the product deemed suitable to satisfy the performance and safety requirements called for the application.

The information and technical data shown in the product data sheets must be examined by users with appropriate technical skills. IVG Colbachini is not responsible for other uses, identified by the end user, that are different from the one shown in its catalogues, product sheets, offers, order confirmations and any recommendations attached.

An inappropriate choice of the product or a failure to follow the procedures of installation, use, maintenance and storage of the hoses may lead to a hose break and cause material damage and/or serious injury to people.

For the selection and proper use of the IVG products you can also refer to the document "Recommendations for selection, storage, use and maintenance of rubber hoses" provided by Assogomma and available on www.ivgspa.it. These recommendations are according to the international standard ISO 8331, "Plastic and rubber hoses and hose assemblies - Guidelines for selection, storage, use and maintenance."

For safety reasons, never exceed the working pressure indicated in the product data sheet.

For specific applications of rubber hoses, please refer to the legal requirements or specific standards; moreover, additional recommendations for particularly critical applications are available.

For further information, contact the Marketing department (marketing@ivgspa.it).